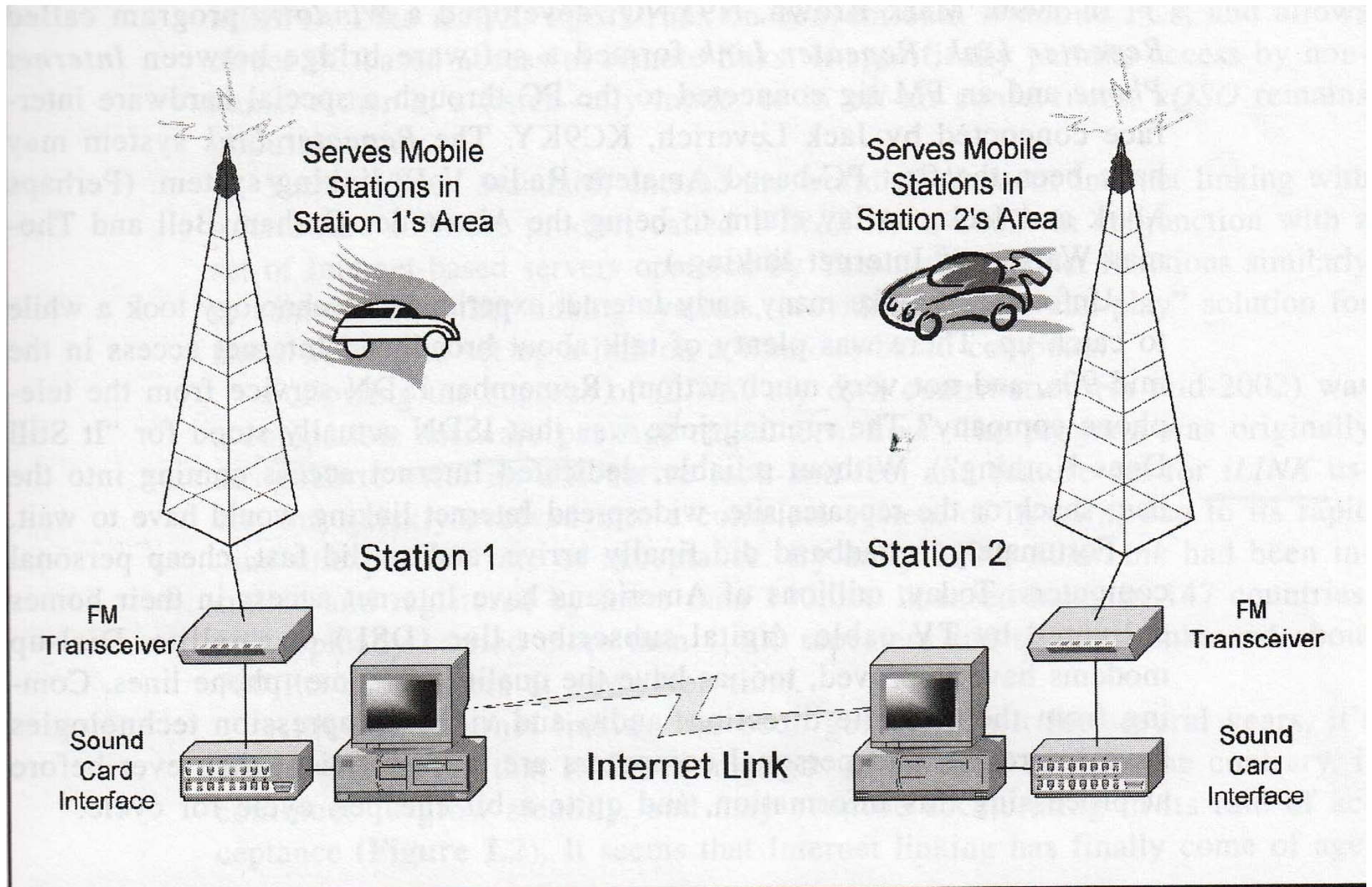
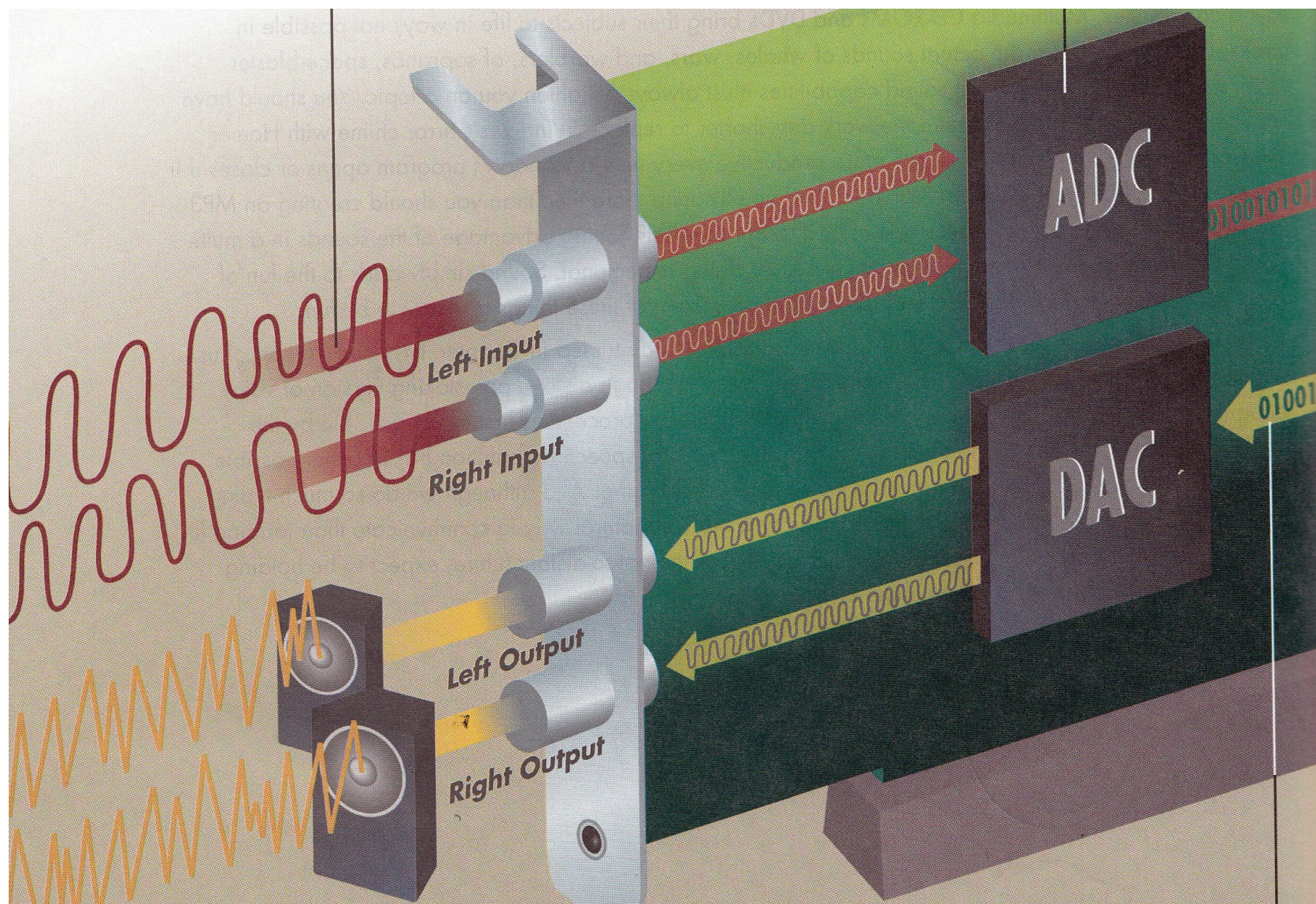


# Linking via Internet





# Analog to Digital

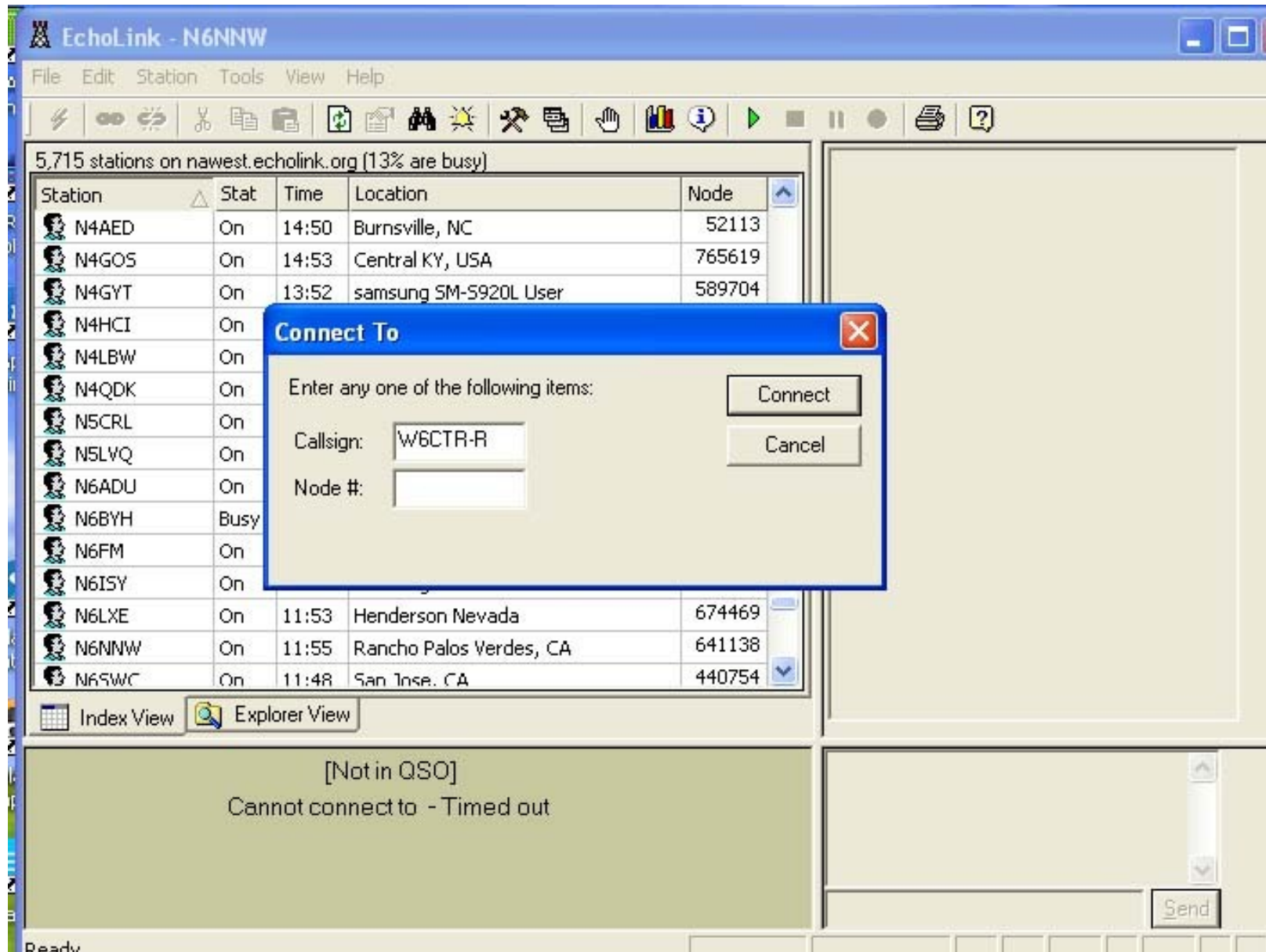




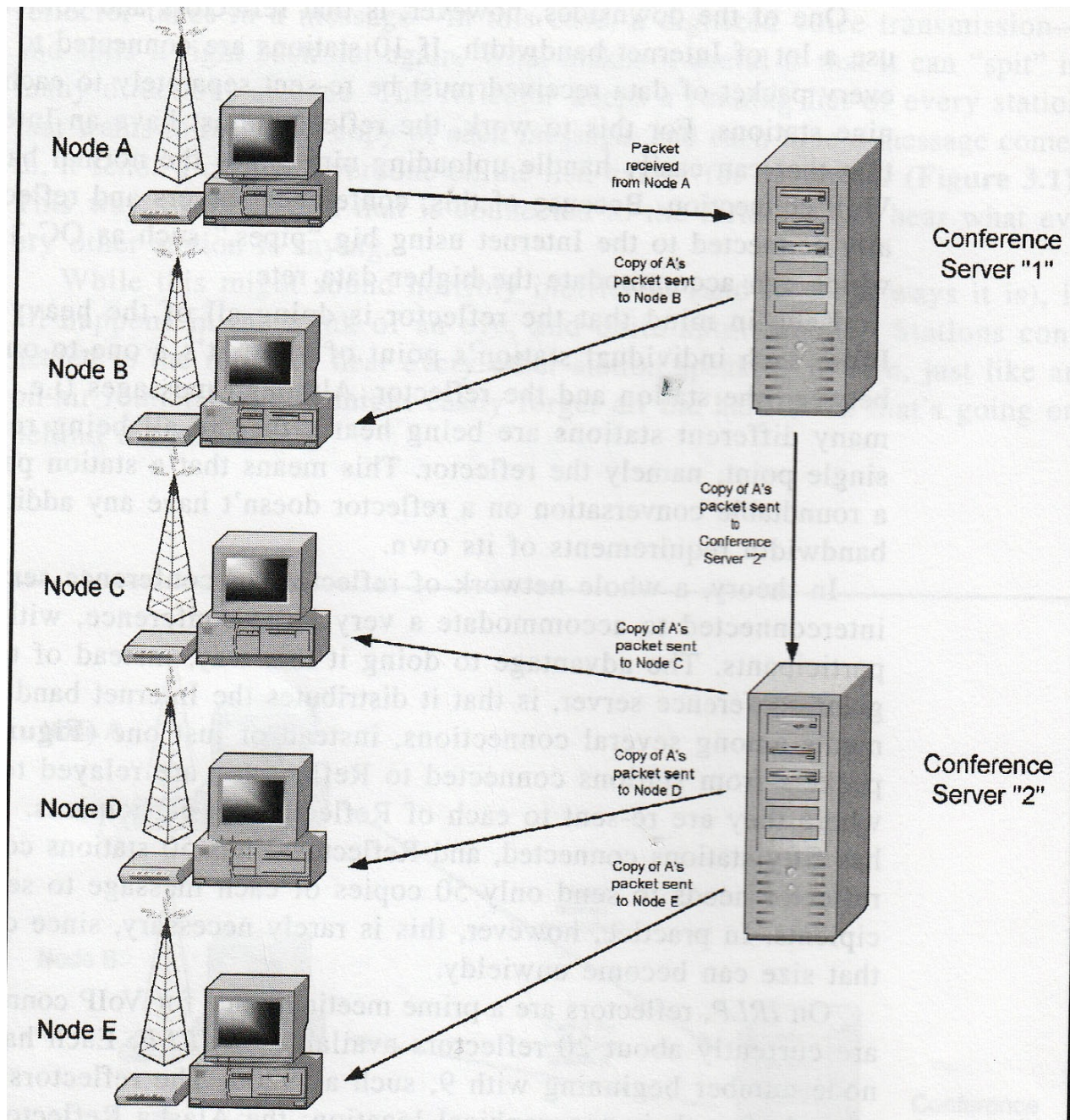
# History of VOIP

- <http://bebusinessed.com/history/voip-history/>
- Internet Phone 1995
- Repeater Link 1996
- IRLP 1997
- iLink 2001
- WIRES 2002
- EchoLink 2002
- <https://en.wikipedia.org/wiki/Echolink>

# Making a connection

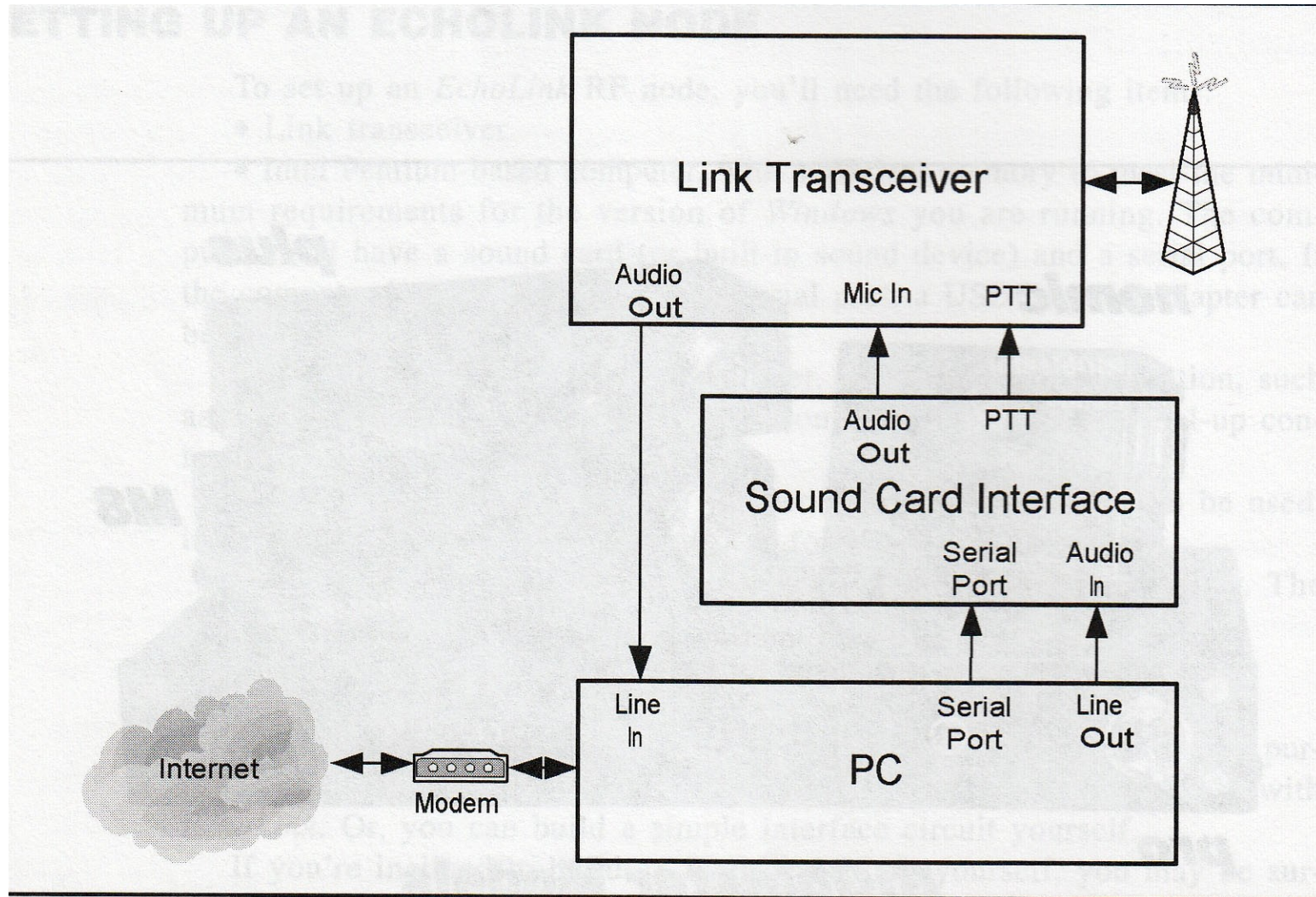


# Conferences





# Setting up Hardware



OR get Kenwood TM-V71

# Single User vs Sysop Mode

- Simplex link
- (Peer to Peer)
- Single User
- Sysop Mode
- Sysop via link transceiver
- Sysop at the repeater

# Validation

- EchoLink can be set up with any of several different callsign suffixes. The callsign N6RPV (with no suffix) is used in Single-User mode, and the callsigns N6RPV-L or N6RPV-R are used in Sysop mode. (Sysop mode requires connecting a radio to your computer's sound card using a special interface device.) Each of these three is considered a separate callsign, and must be validated separately for EchoLink.
- If you would like to validate this call for use with EchoLink, please download, install, and run the EchoLink software first. This registers your call with the system. Then, return to the Validation page to proceed with validation.



# Proof of License

(1) Search by Amateur call sign in:

<http://wireless.fcc.gov/uls/index.htm?job=home>

(2) Generate your license at:

<http://www.ae7q.com/misc/Generate.php>

(3) Sign up for LoTW at:

<https://lotw.arrl.org/lotw-help/getting-started/>

(4) Submit copy of license to:

<http://www.echolink.org/validation>

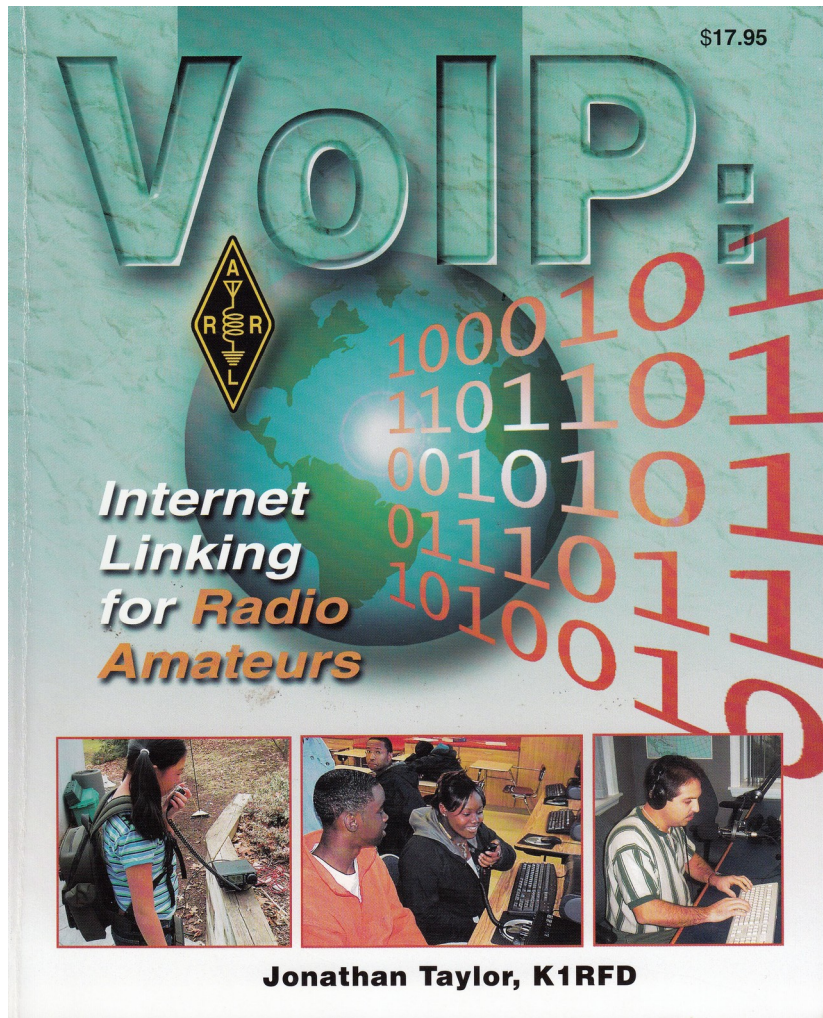
(5) Wait for Postcard

# Be aware of

- Internet delays
- Forward error correction
- Compression
- Firewalls
- Proxy Servers
- Out of order Internet Packets



# References



[Www.echolink.org](http://www.echolink.org)

[Www.echolink.org/help](http://www.echolink.org/help)

[Groups.yahoo.com/group/echolink](http://Groups.yahoo.com/group/echolink)

EchoMac (for Mac OS X)

<http://www.arrl.org/files/file/Technology/tis/info/pdf/voip.pdf>